



Paxton

Network Access Control

Who are Paxton?

- > Market leader
- > Consistent growth
- > Industry leading support
- > 100,000 doors a year
- > Installer focused
- > UK manufacturer



What is Access Control?



What Access Control Offers



Security



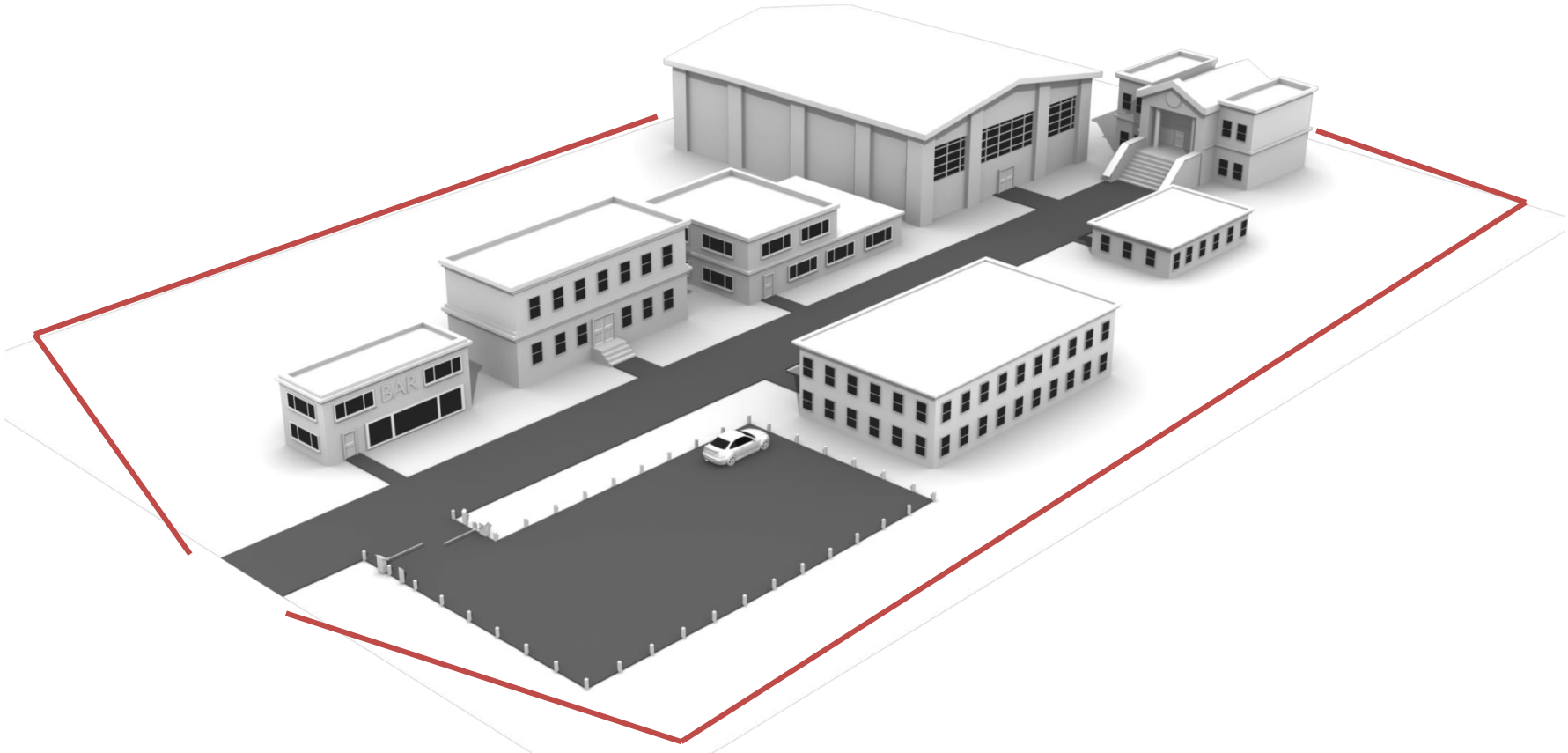
Ease of management



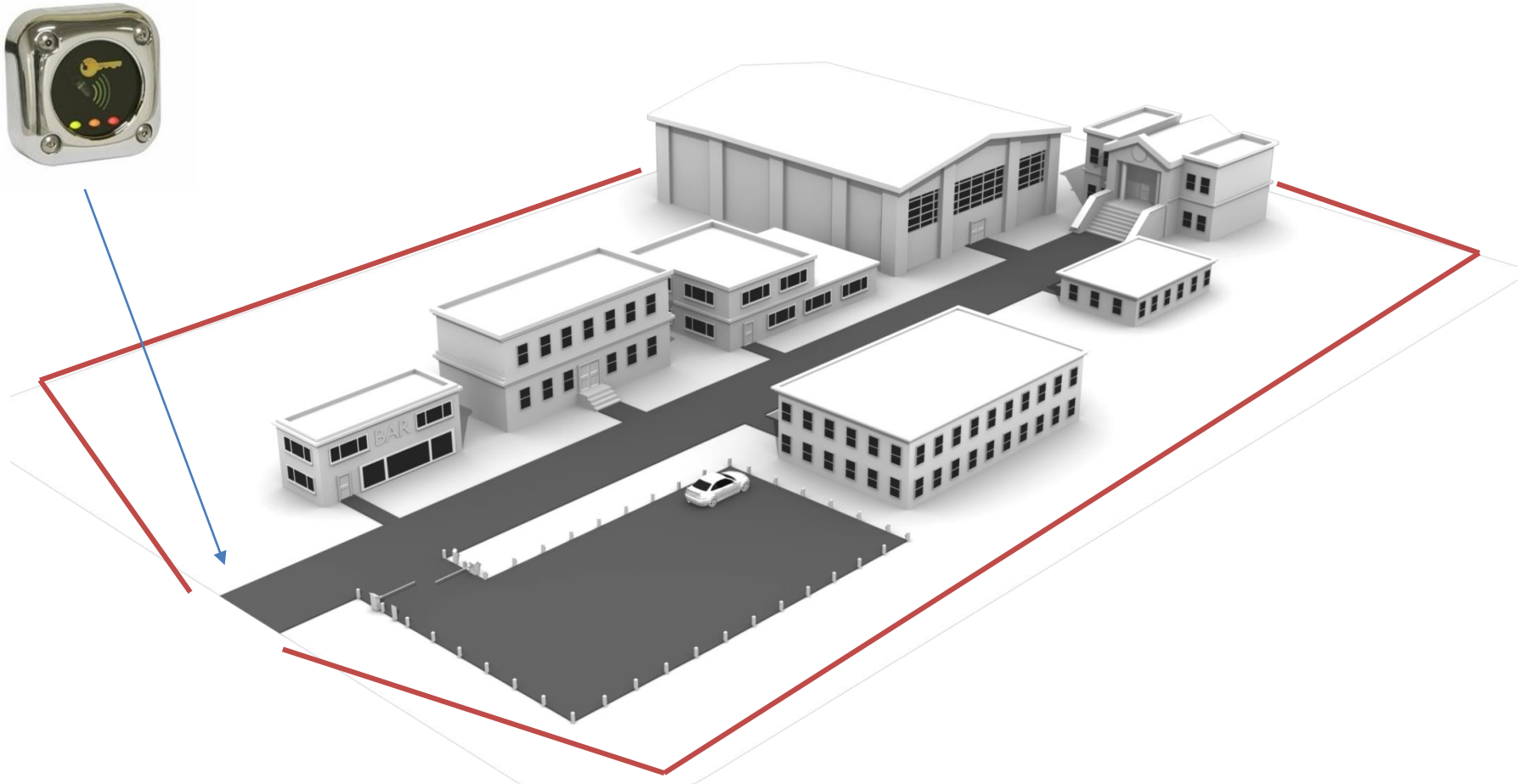
Convenience

Net2 Systems Design

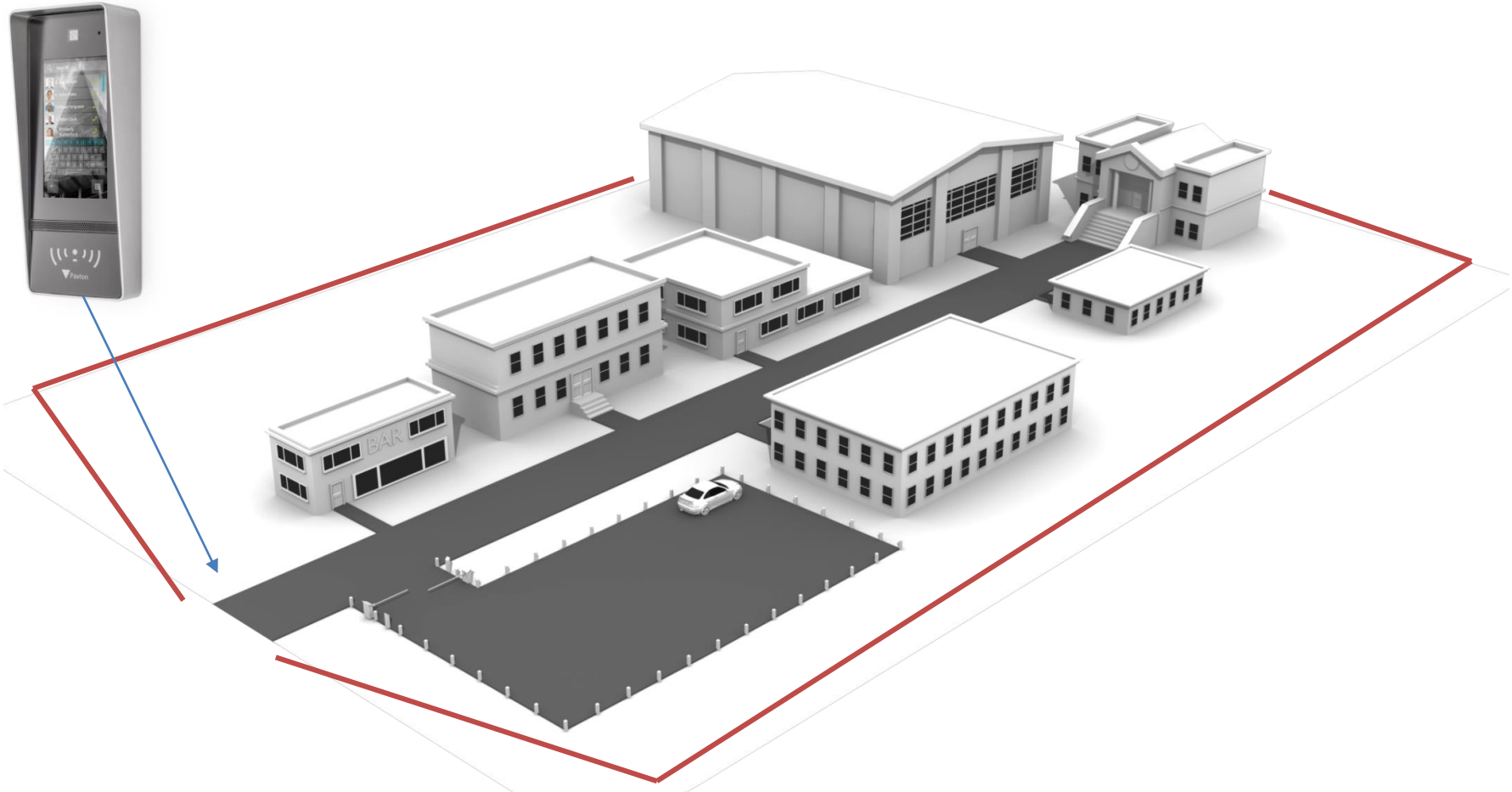
External Perimeter Solution



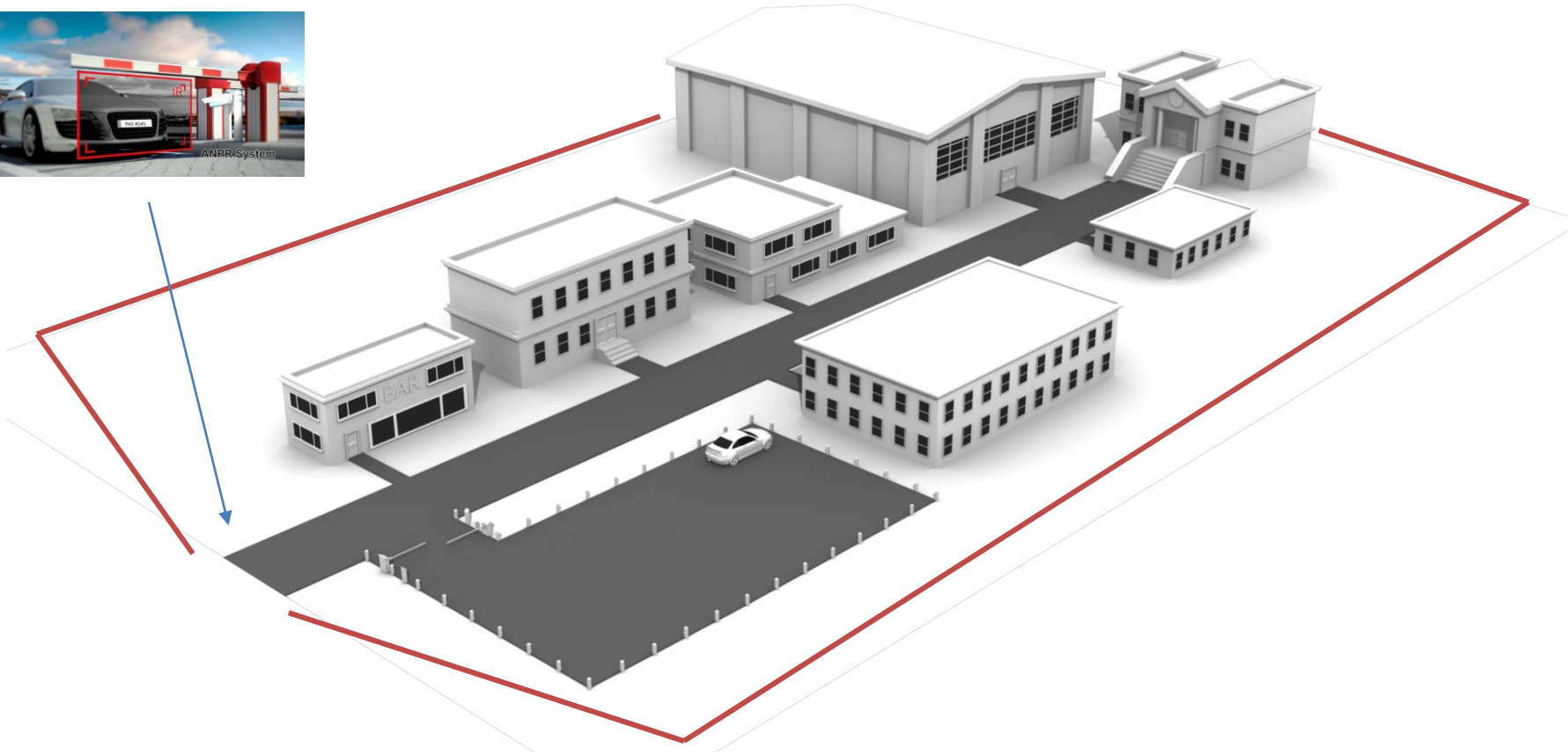
External Perimeter Solution



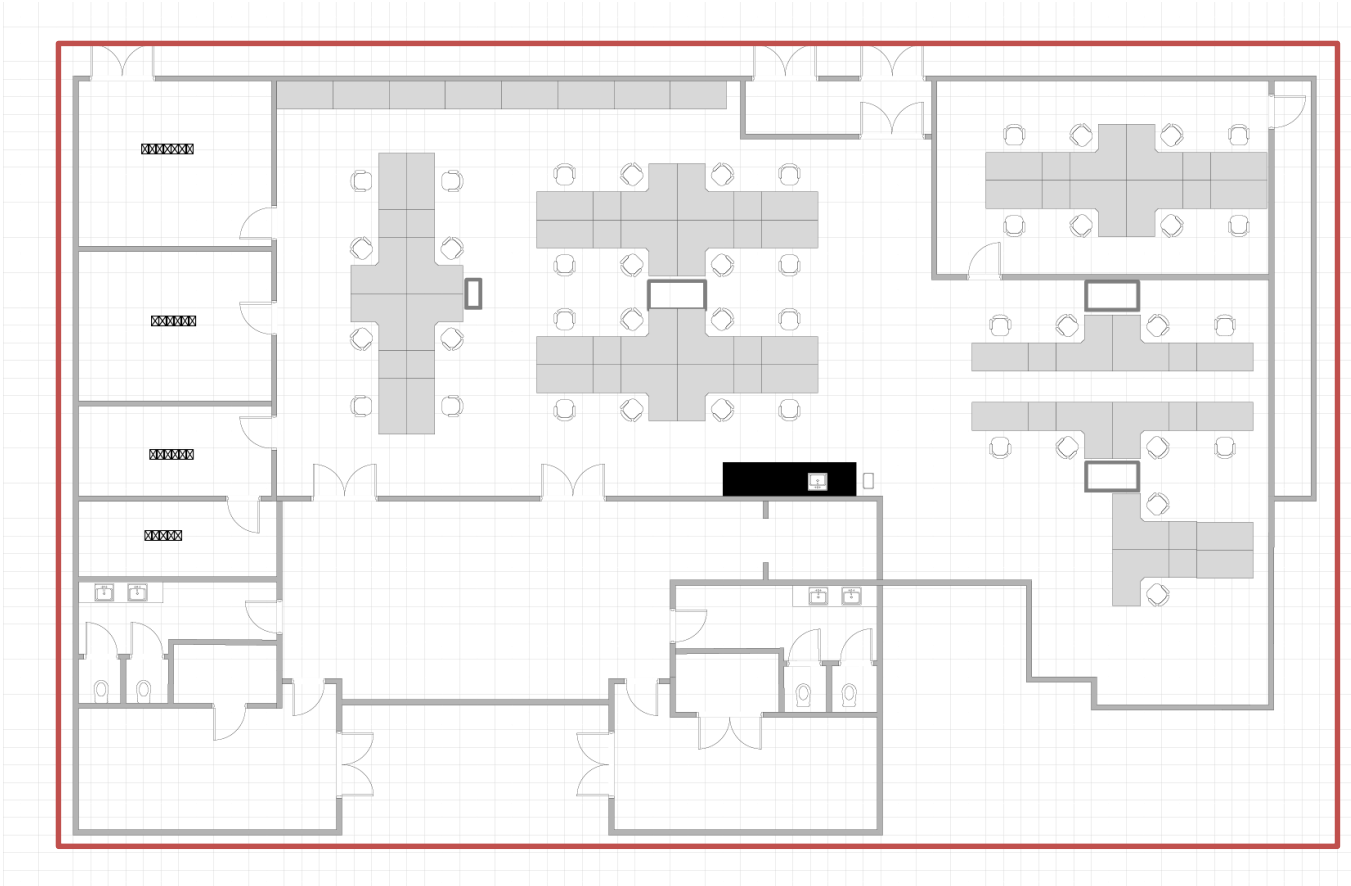
External Perimeter Solution



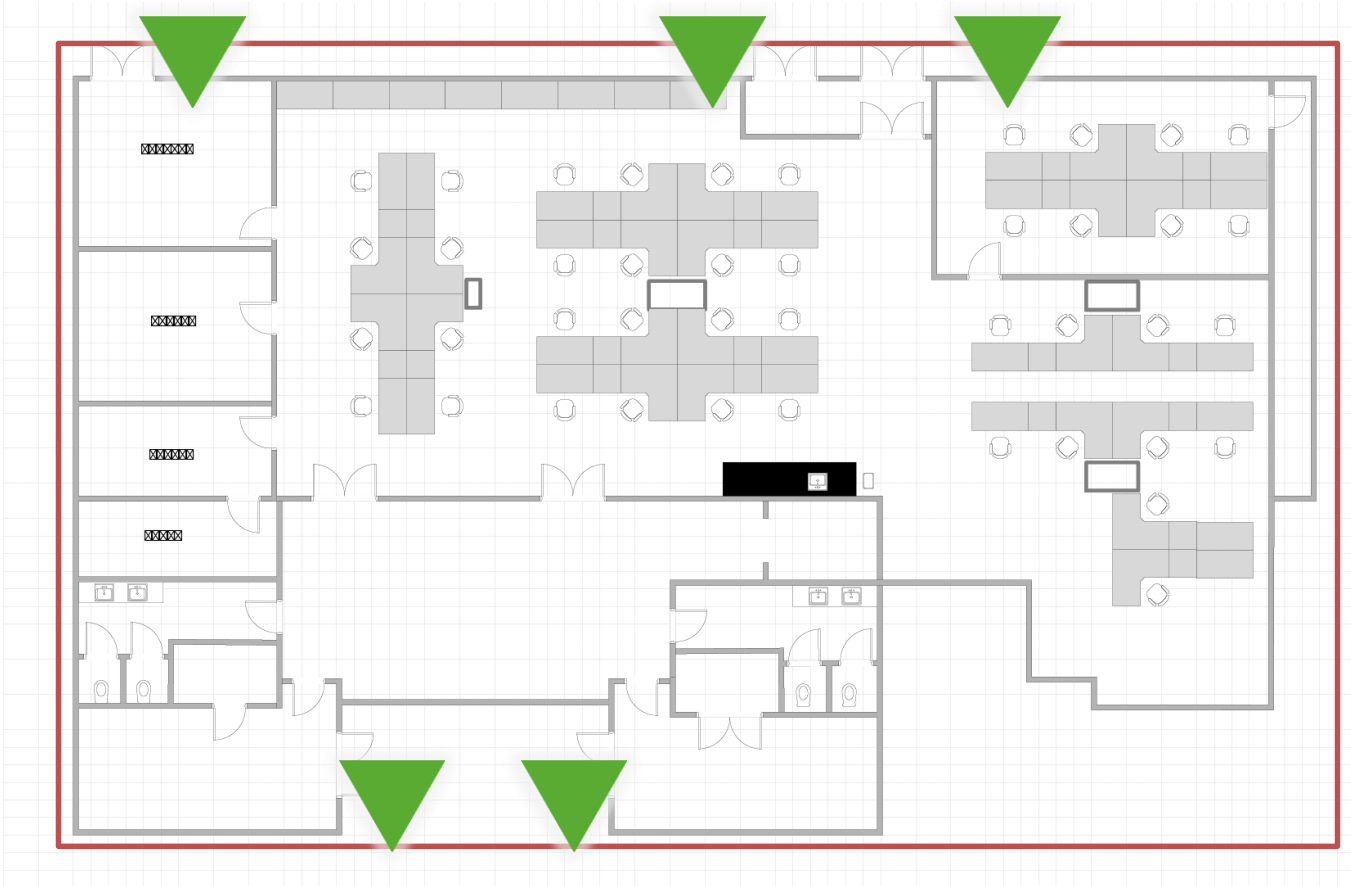
External Perimeter Solution



Site Plan – Securing External Doors



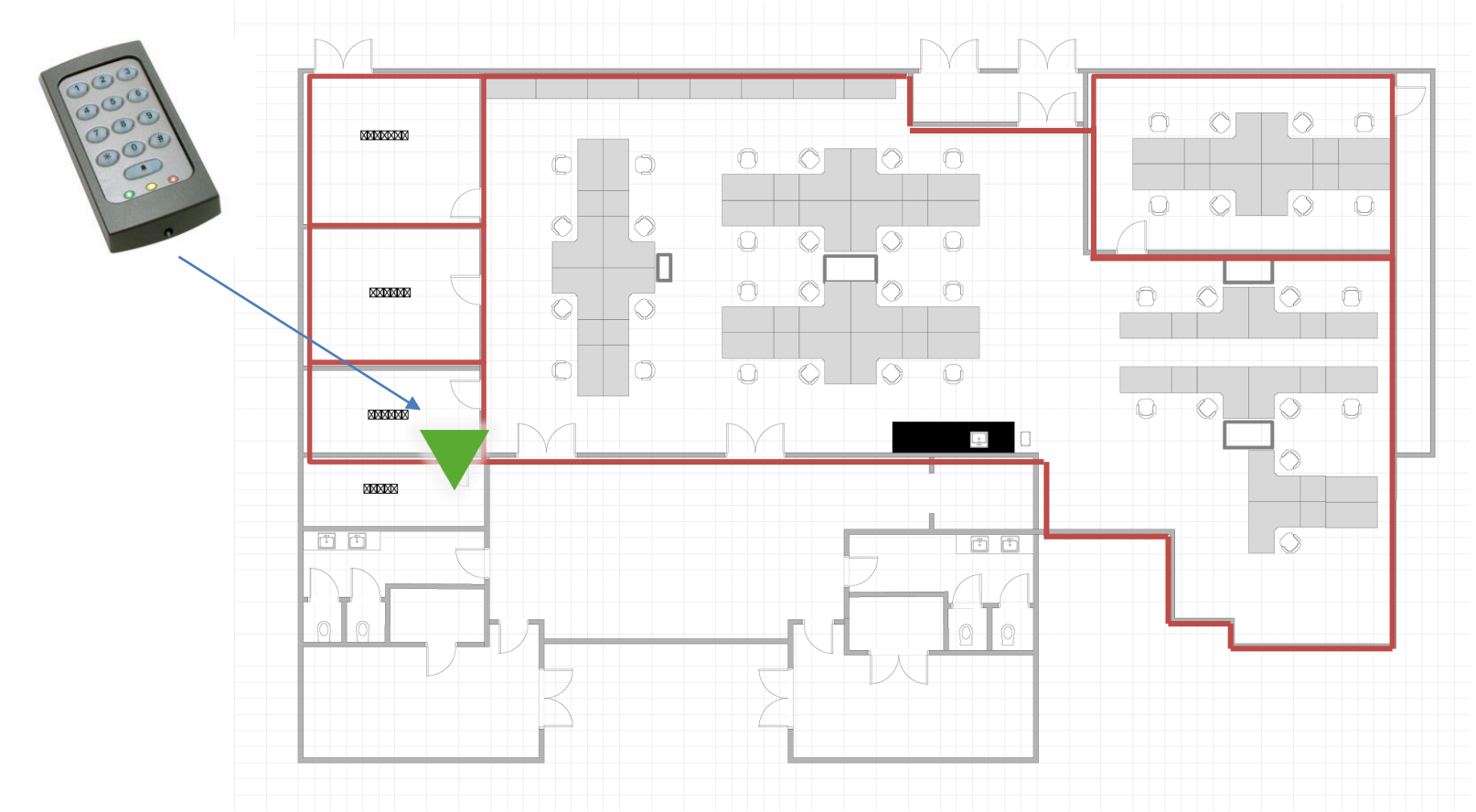
Site Plan – Securing External Doors



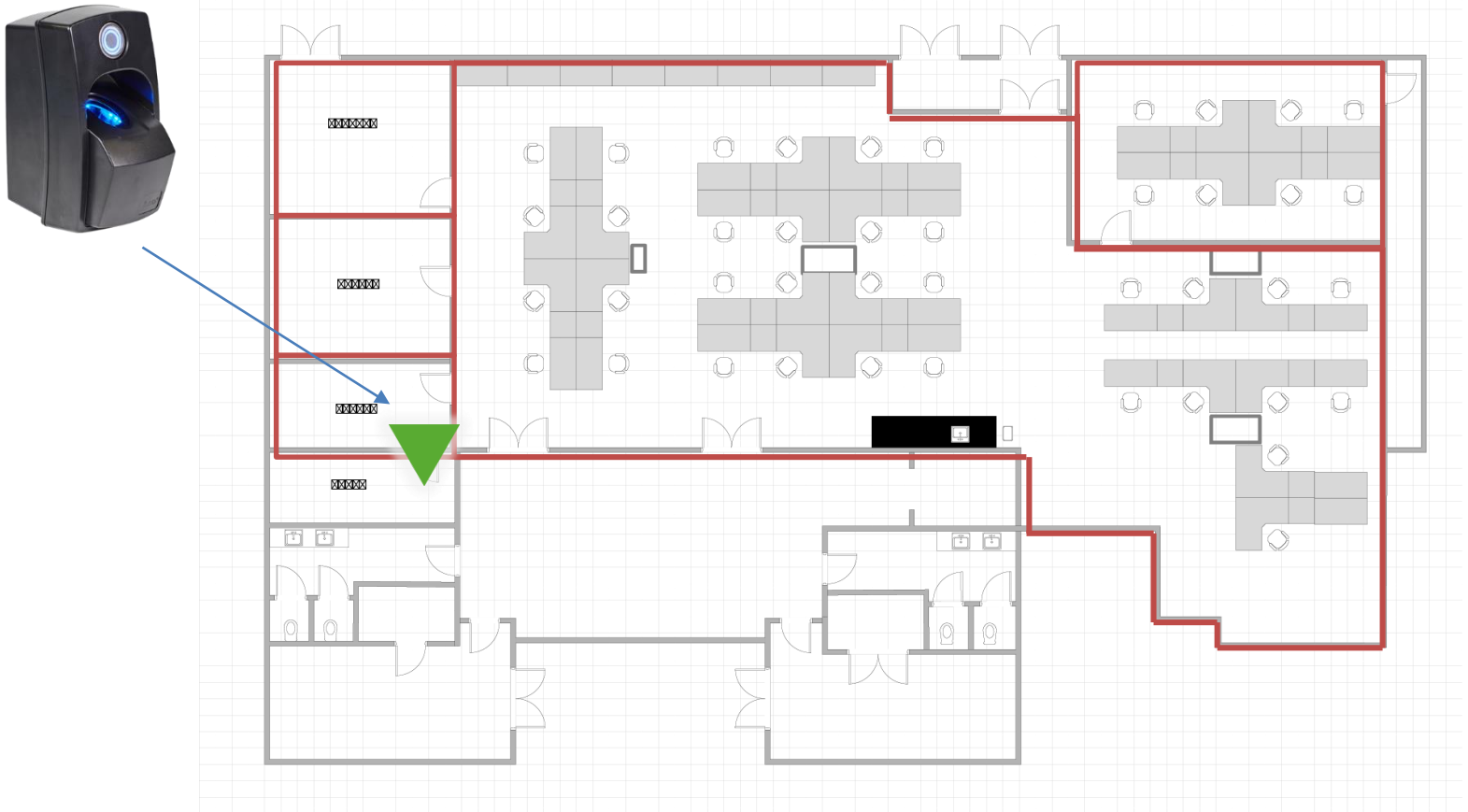
Site Plan – Securing Internal Doors



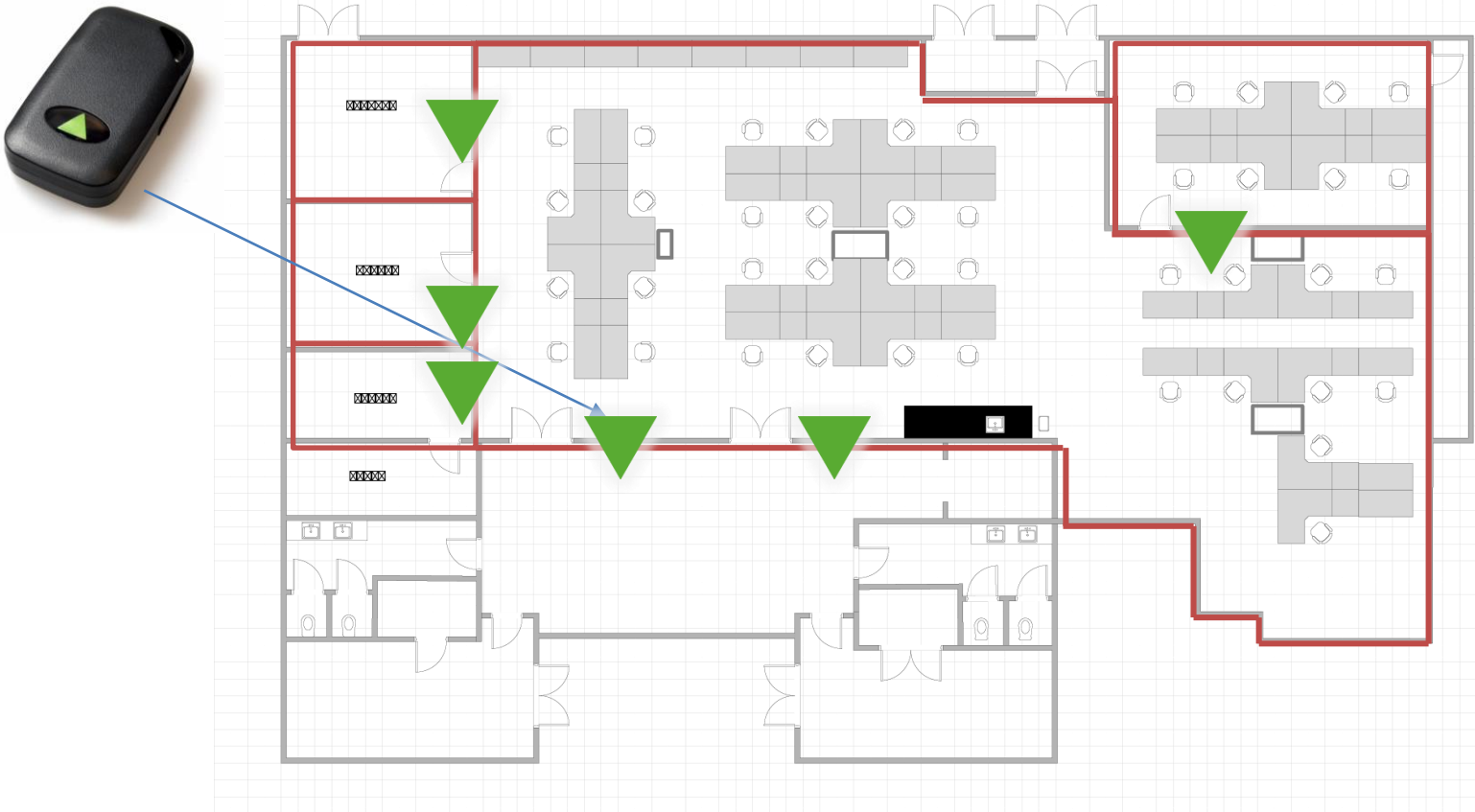
Site Plan – Securing Internal Doors



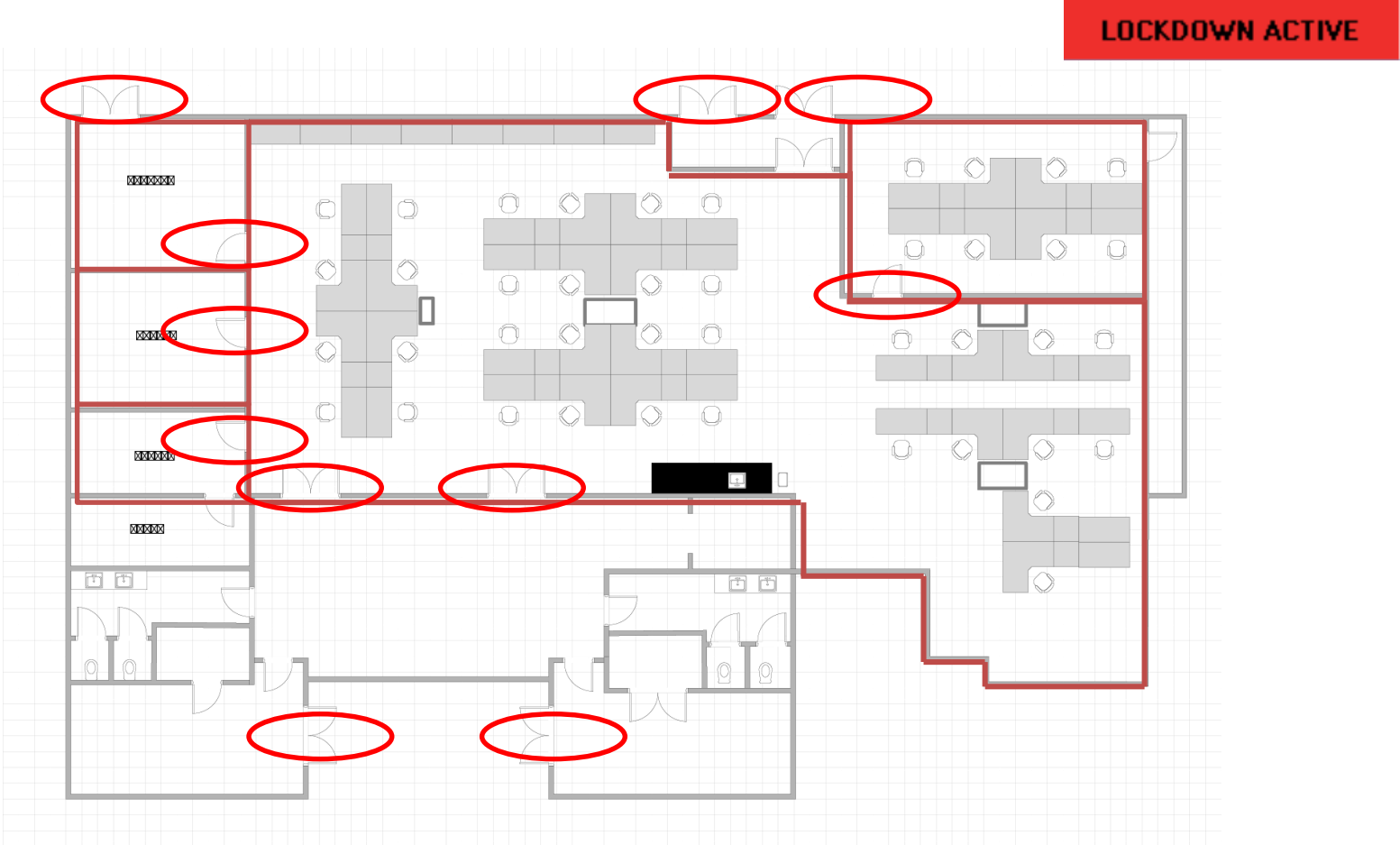
Site Plan – Securing Internal Doors



Site Plan – Hands Free

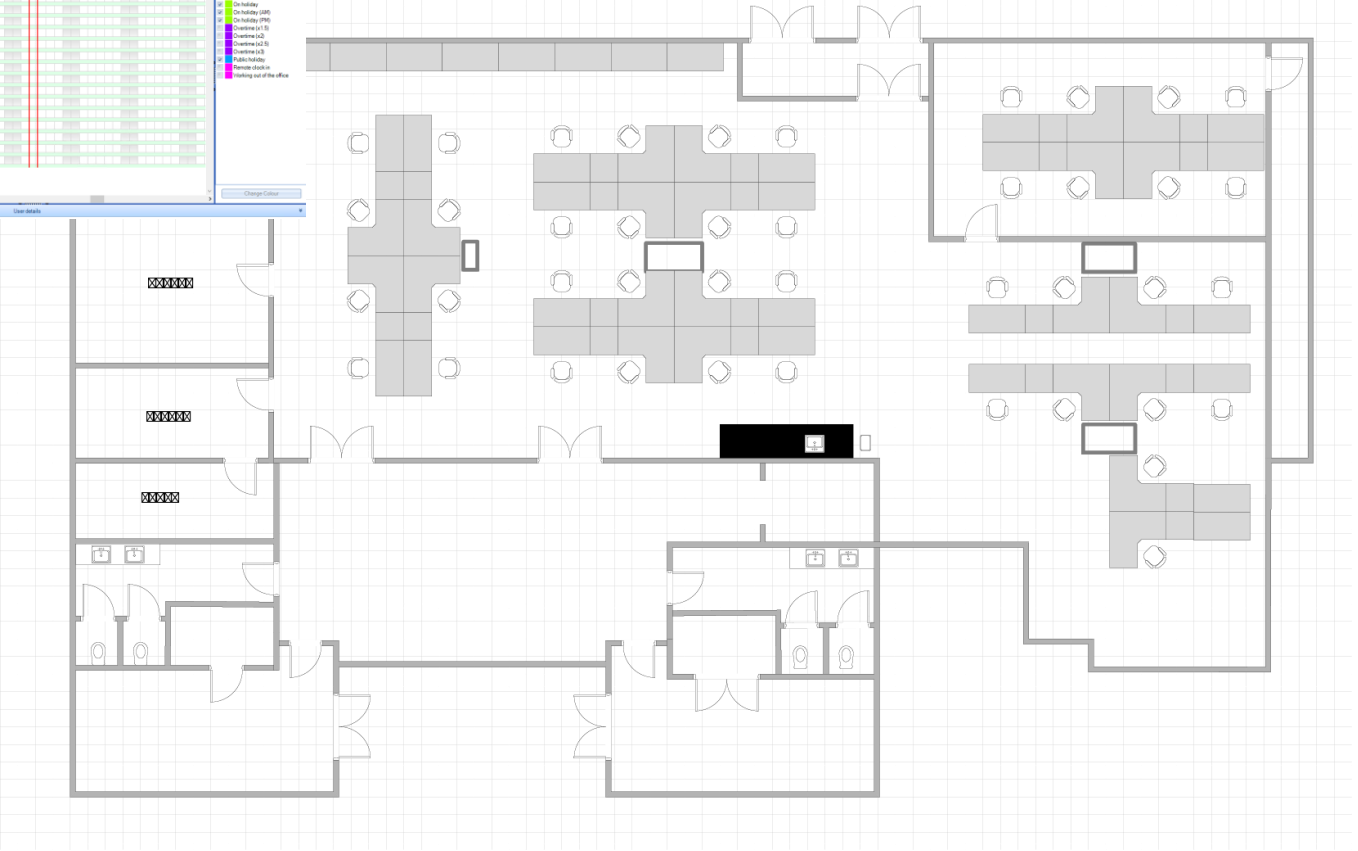


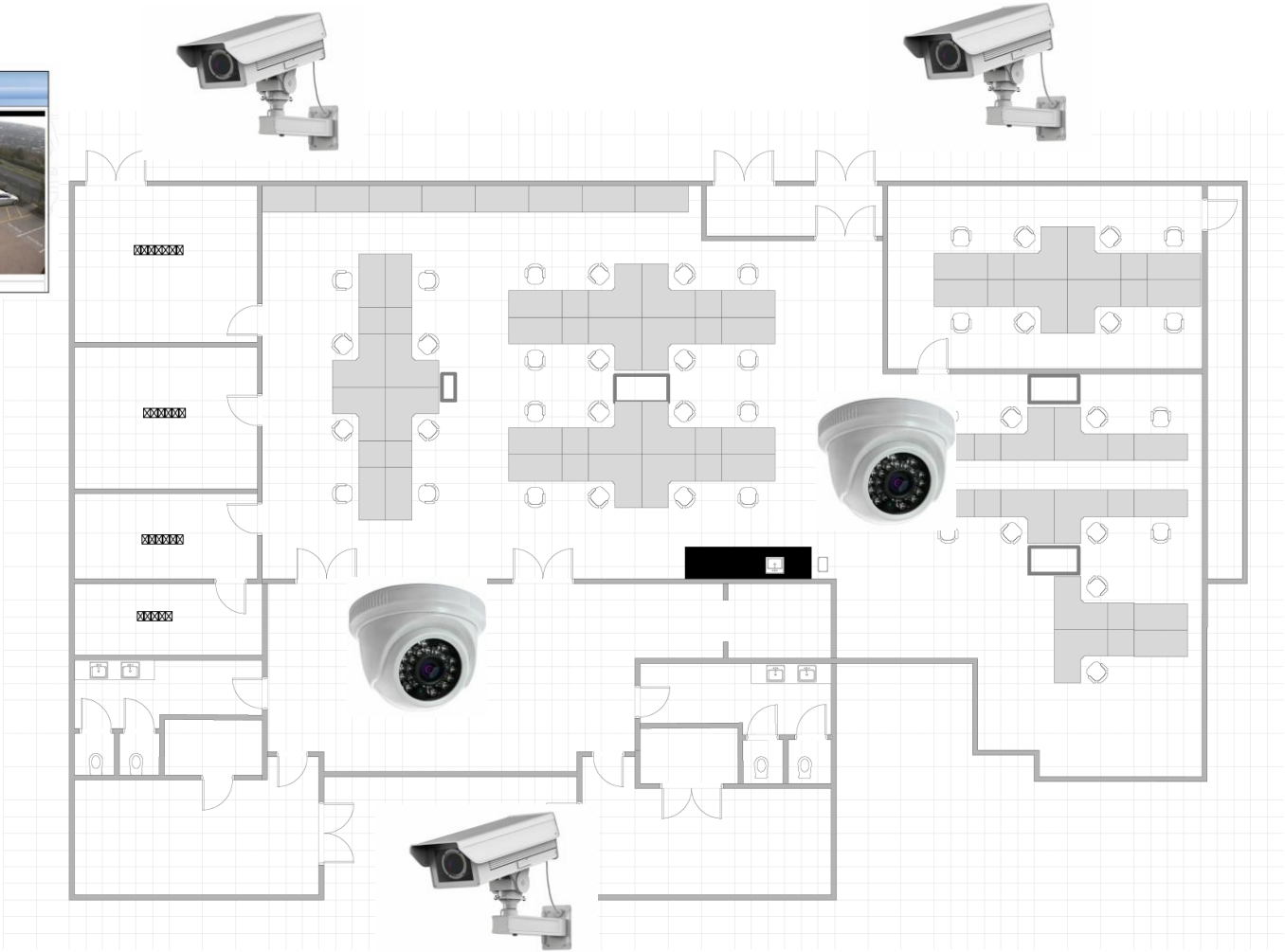
Site Plan – Lockdown

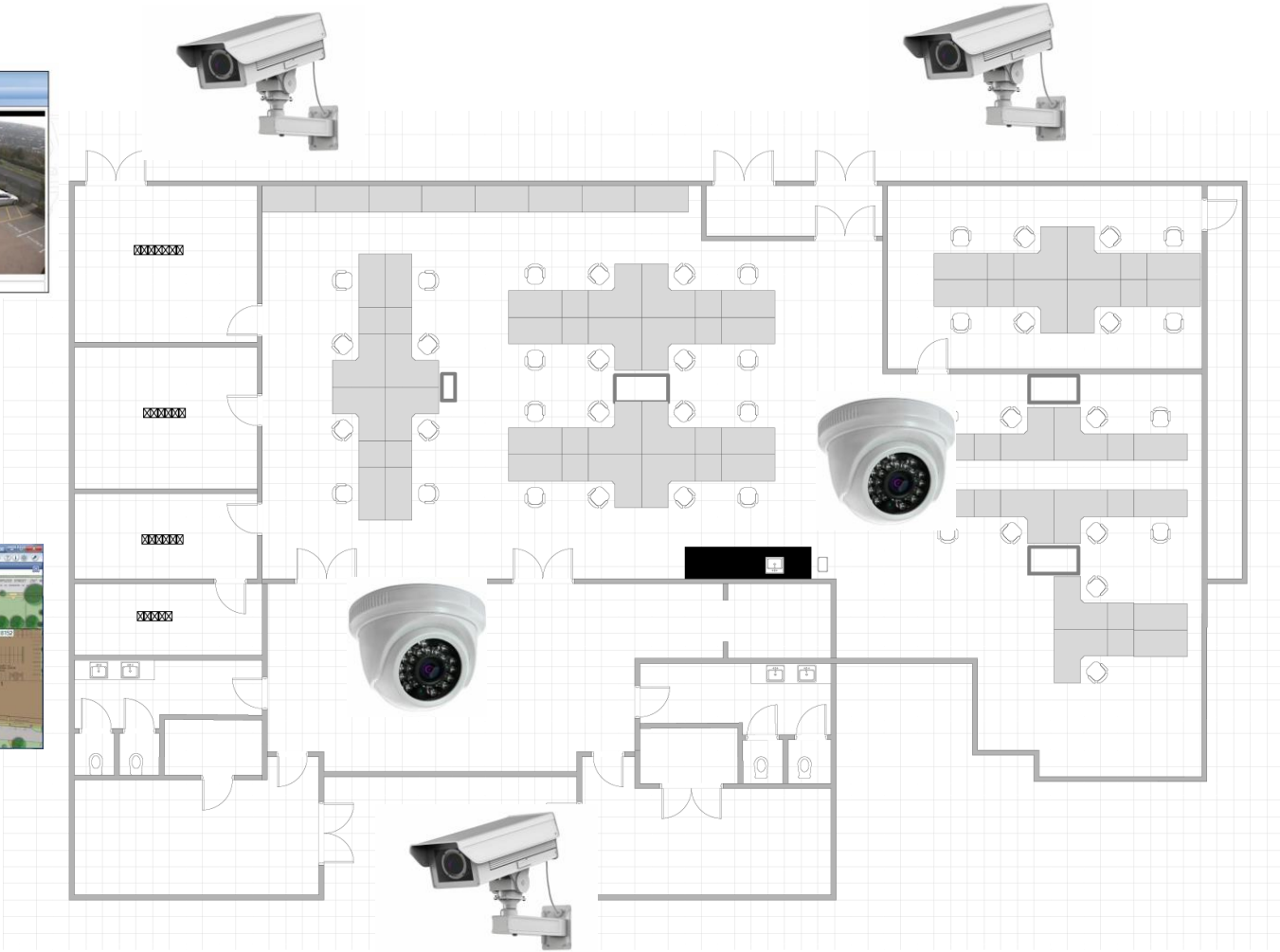
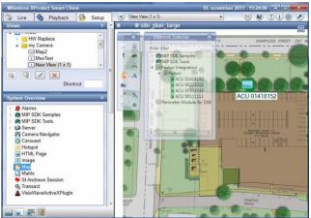


Timesheet

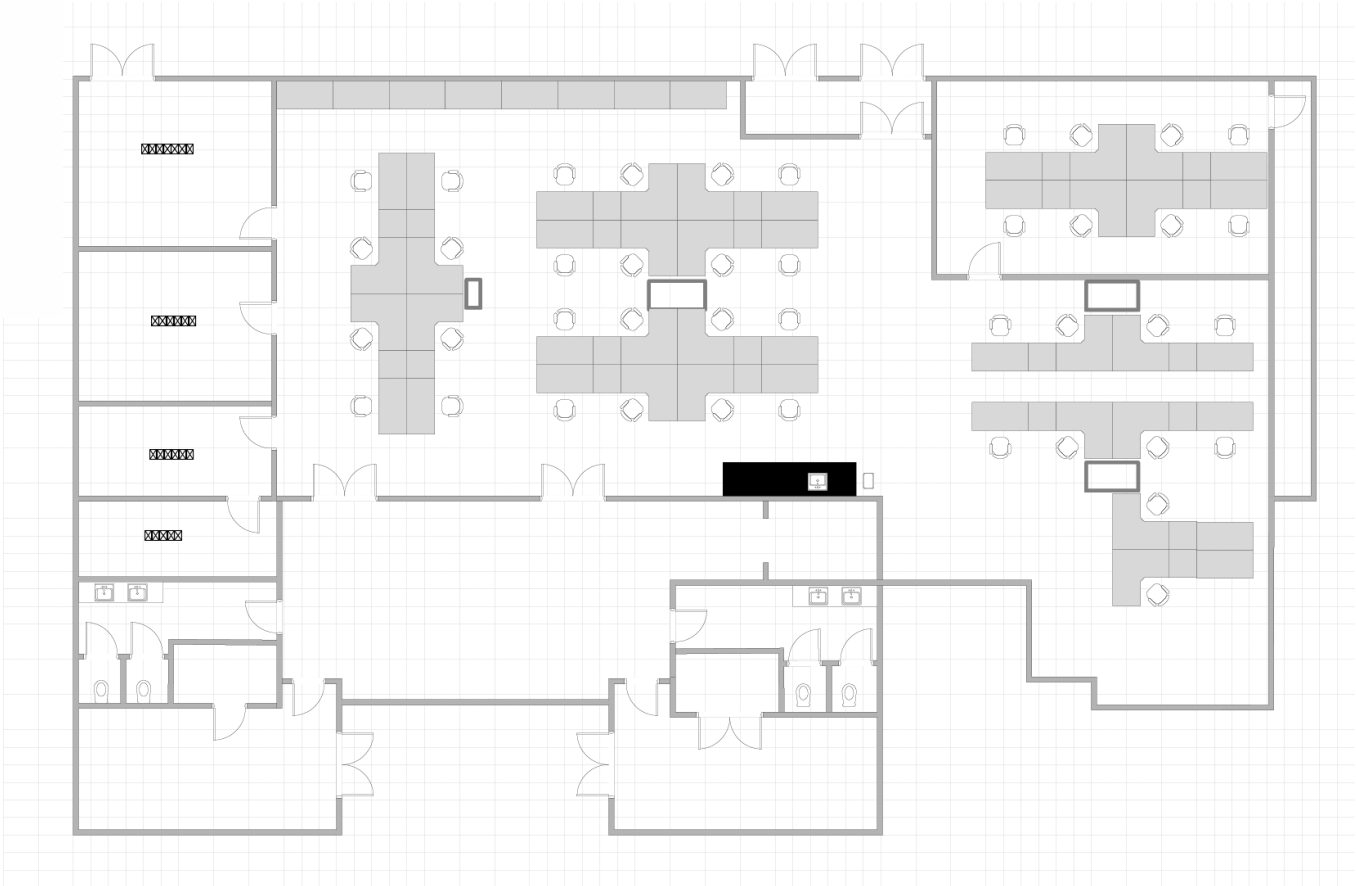
The screenshot shows the H&MCT Timesheet application. At the top, there is a search bar with the text "Get all of rooms" and a "Go" button. Below this is a dropdown menu for "Department" set to "(All Departments)". The main area is a calendar grid for October 2018, with days 1 through 31. A red vertical line is positioned on the 10th. To the left of the calendar is a list of departments: GJ PFI, Maria PFI, Nicola PFI, Rachel PFI, Reception, Back Door PFI, Bridge, Albert, GJ Wash, PFI and Lease Holding, Garmen Running Wash, GJ HandFree, HMG Car Key, Maria Car Key, and Spare PFI under stairs. To the right of the calendar is a legend with categories: Doctor's Appointment, Doctor's Appointment, Non-paid leave, On holiday, On holiday (PM), On holiday (AM), On holiday (PM), On holiday (AM), Public Holiday, Remote lock in, and Working out of the office. At the bottom of the window, there is a "User Details" section.







Fire



Fire



Create Roll Call Report

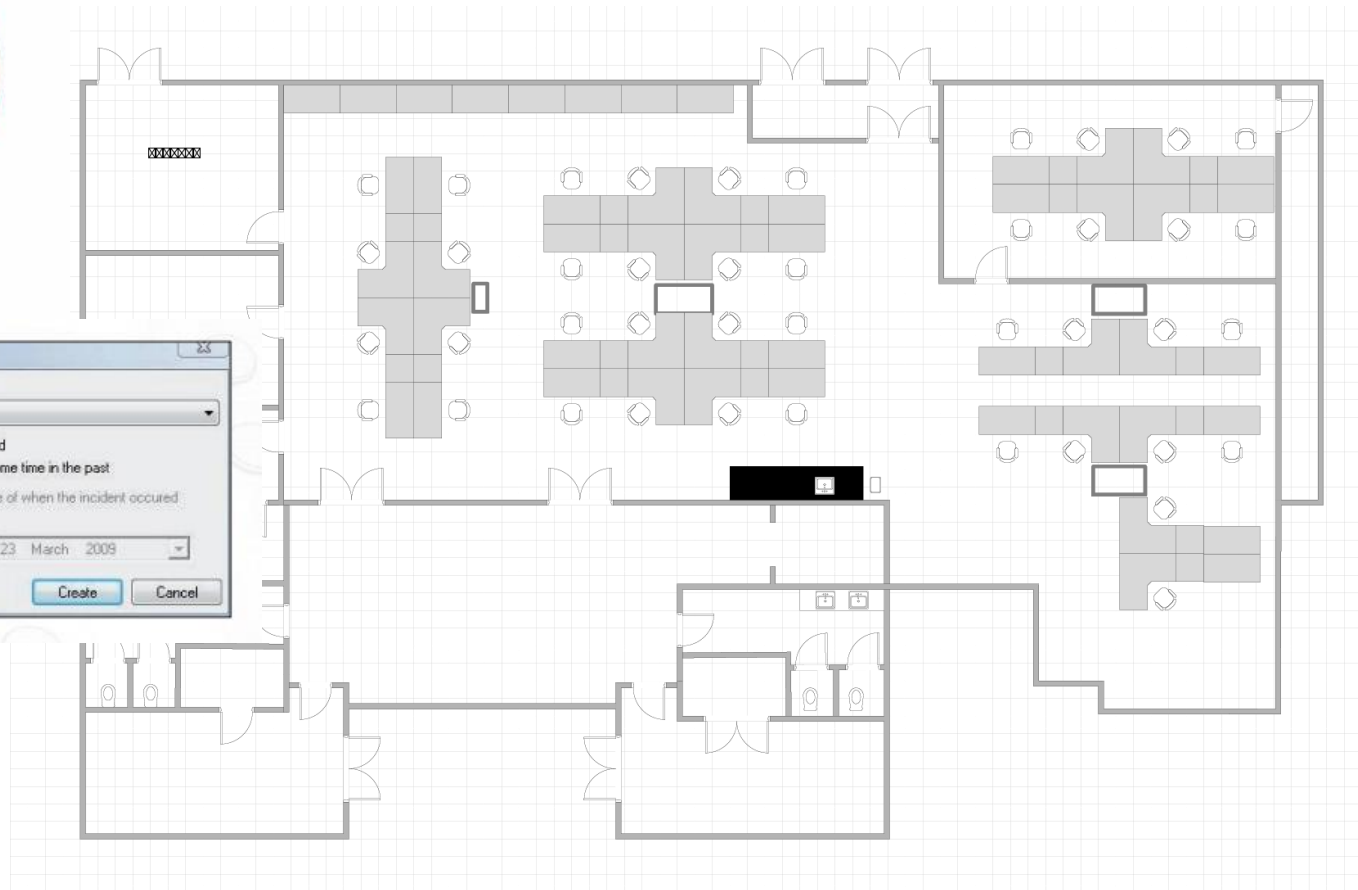
Where did the incident occur?
Building Complex

The incident has just occurred
 The incident happened at some time in the past

Please enter the time and date of when the incident occurred:

10:53:58 23 March 2009

Simple Create Cancel



Fire

The image illustrates a fire incident response workflow. On the left, a red fire alarm pull station is shown with a "FIRE ALARM" label. In the center is a detailed floor plan of a building with various rooms and furniture. To the left of the floor plan is a desktop software window titled "Create Roll Call Report". This window includes a dropdown menu for "Where did the incident occur?" set to "Building Complex", two radio buttons for "The incident has just occurred" (selected) and "The incident happened at some time in the past", and input fields for time (10:53:58) and date (23 March 2009). Buttons for "Simple", "Create", and "Cancel" are at the bottom. In the center, a mobile phone screen displays a "Home" screen with a "Generate roll call for:" dialog box. The dialog has two radio buttons for "Campus" and "Main Building", and "CANCEL" and "OK" buttons.

Triggers & Actions

The floor plan shows a central hallway with several rooms on either side. A black rectangle on the right side of the hallway represents a door. Four yellow ID board relay modules are positioned around the perimeter of the floor plan. The 'Triggers and Actions' dialog box is titled 'Triggers and Actions' and contains the following text and elements:

When a user is granted access through a door...

When an event matches this rule, would you like to switch any ID board relays?

Output name	Action
Relay 1	Turn on for 5 seconds
Relay 2	
Relay 3	Turn on
Relay 4	

No change Turn on for [] seconds

Turn on

Turn off

Buttons: Cancel, < Back, Next >, Finish

NET2 INTEGRATIONS



Active Directory
ANPR
Biometrics
CCTV Integration
Club Management

Intruder
Key Management
PSIM
Roll Call & Mustering
Site Management

Time & Attendance
Video Management
Visitor Management
OEM Bespoke Products

Budget Considerations

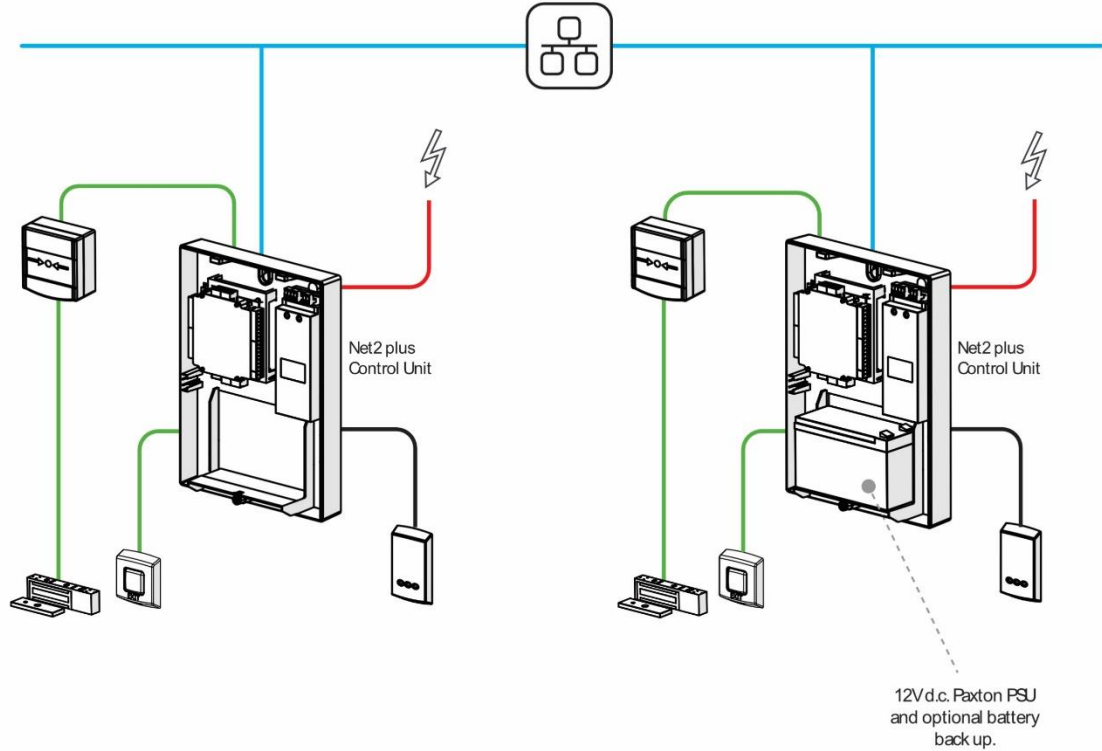









Considerations

- Hardwired vs. PaxLock
 - When to use what
 - Traffic
 - Robustness – what are the limits
 - Cost savings
- Entry
 - Fast to install, reduced time on site therefore reduced labour costs
- Standalone features in Pro and Entry
 - Great for small sites
 - Easy upgrade path to Net2 by adding a server later

Topology

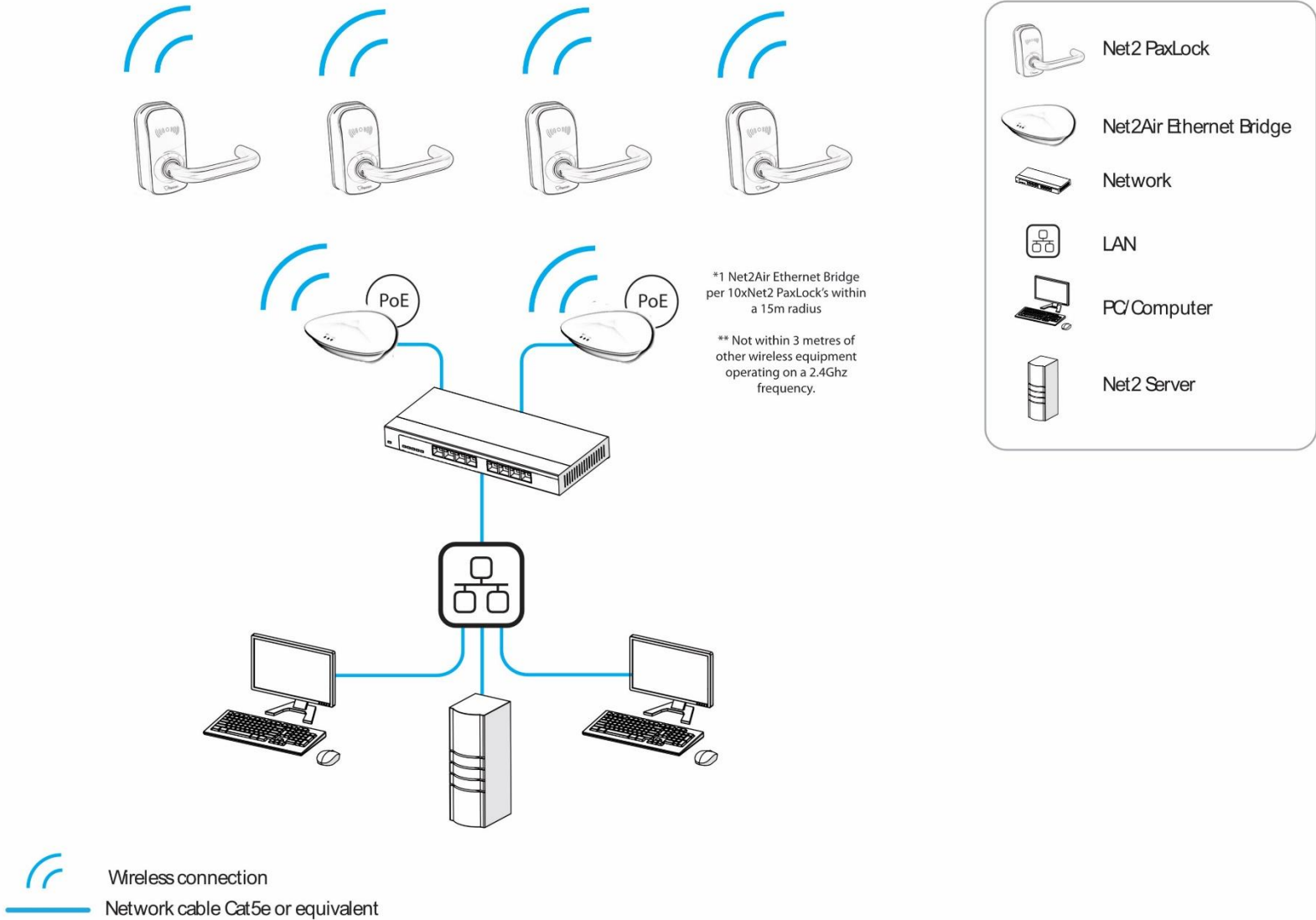
Net Plus multi-door



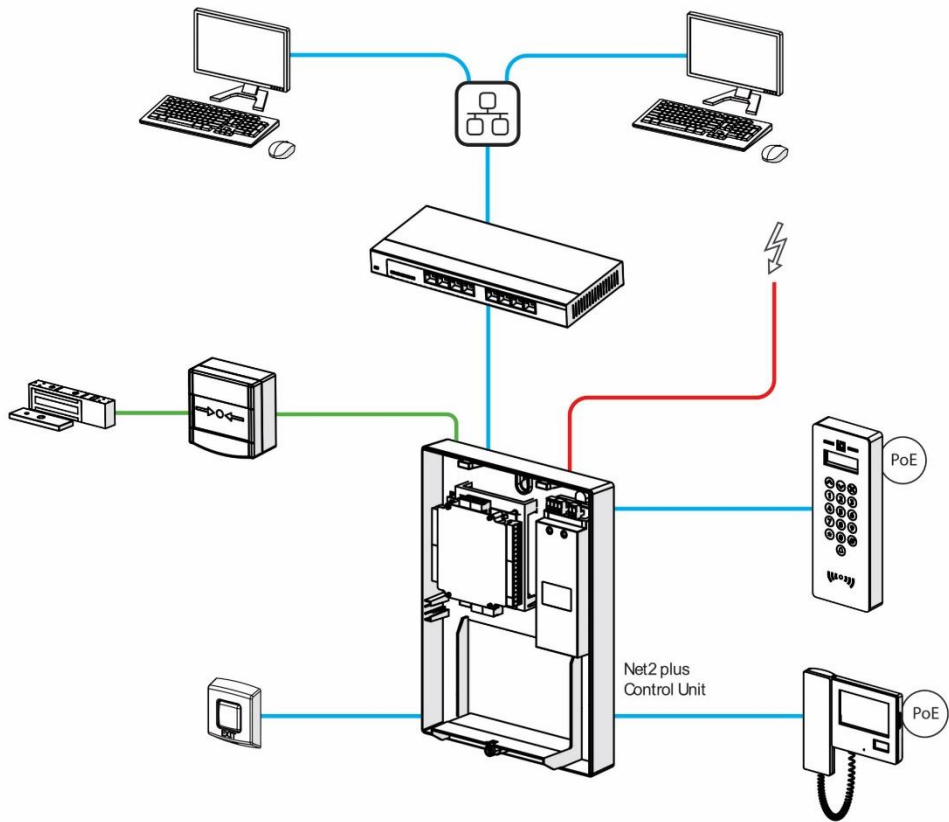
-  LAN
-  Control Unit
-  Green Break Glass
-  Exit Button
-  Lock
-  Reader
-  Mains

- Main supply
- Reader cable - Belden 9540 100m Max
- Twin core
- Network cable











Net2 PaxLock



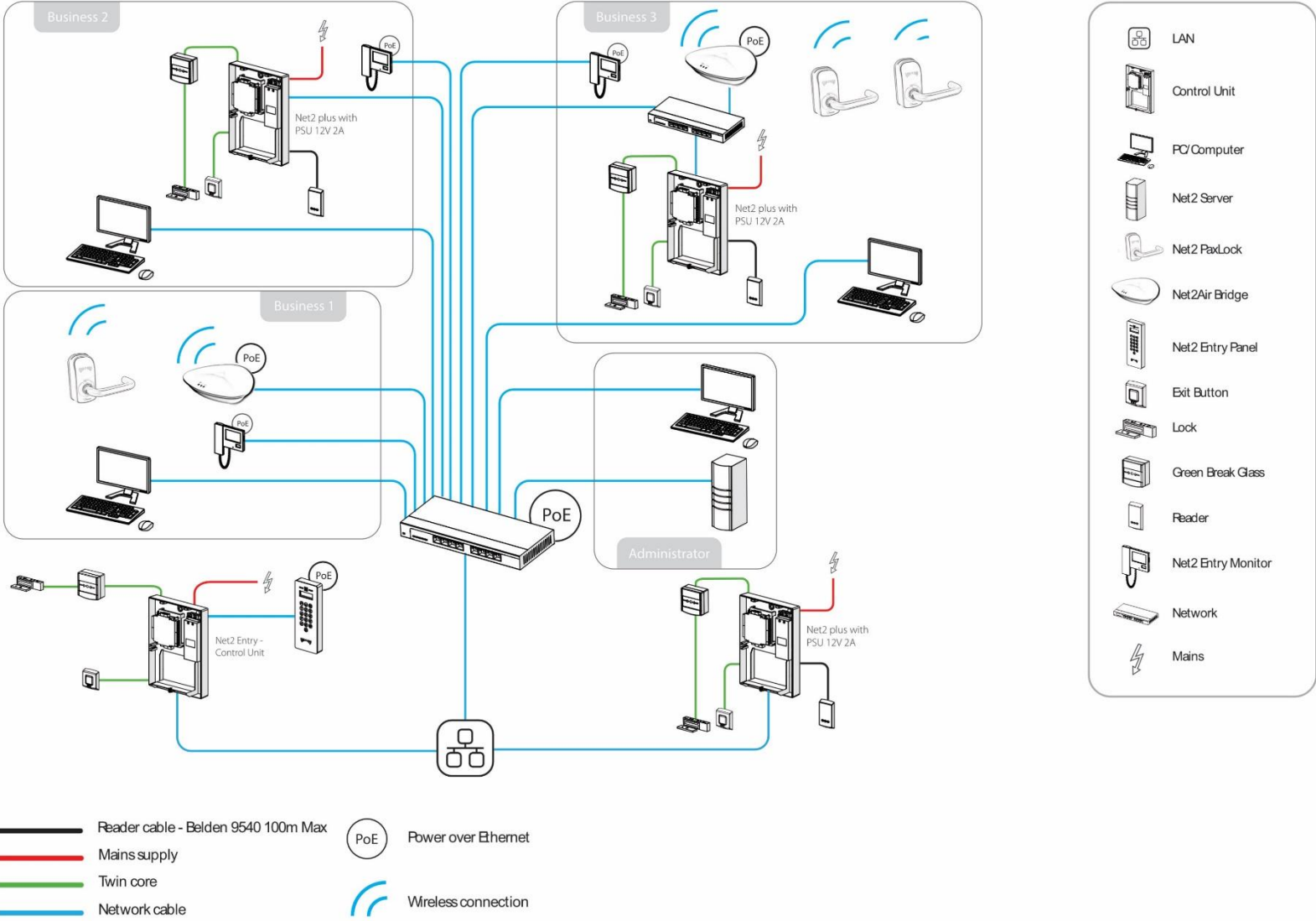
Net2 Entry Single Door Schematic



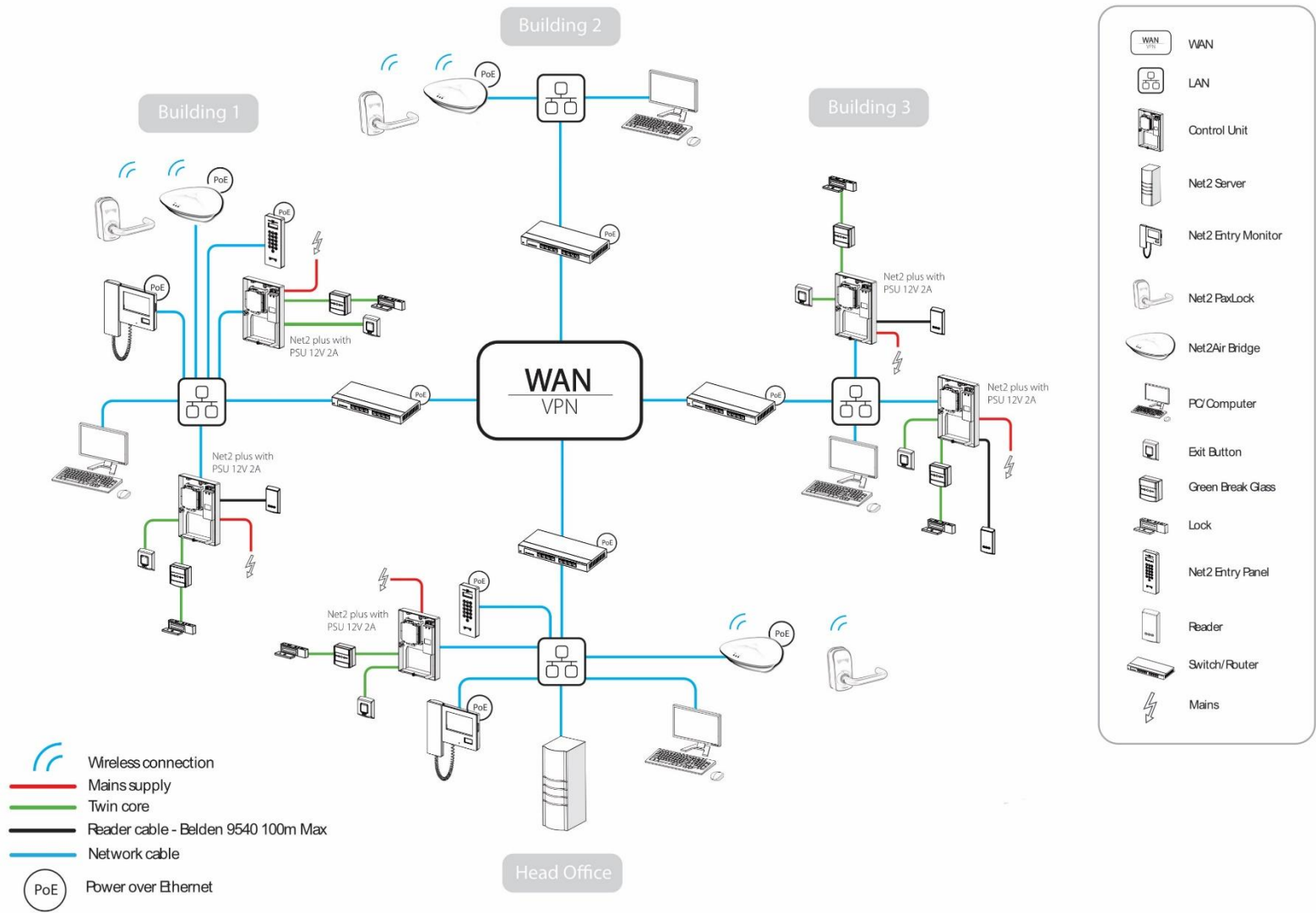
— Main supply
— Twin core
— Network cable

-  LAN
-  Control Unit
-  Net2 Entry Panel
-  Exit Button
-  Net2 Entry Monitor
-  PC/Computer
-  Network
-  Mains
-  Green Break Glass
-  Lock

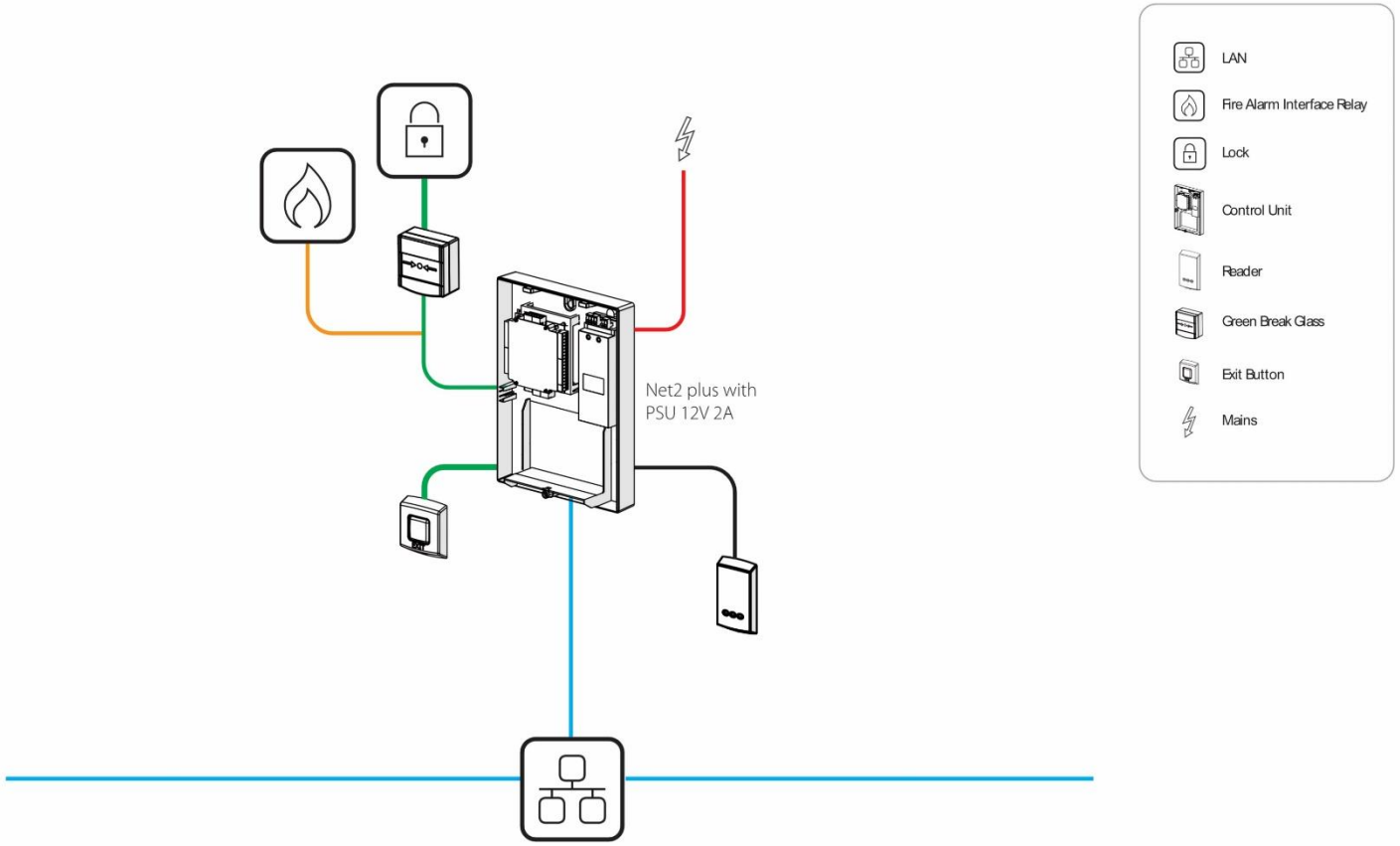
Example Implementation: Commercial Building



Example Implementation: Public Sector



Sample Integration: Fire



- Fire resistant cable
- Mains supply
- Twin core
- Reader cable - Belden 9540 100m Max
- Network cable

Software



Software

- License free
- Free software option
- Windows operating system
- Client/ server
- Open protocol
- Easy to use and intuitive
- Free support



Paxton Connect Admin

NEW Paxton Connect Admin

Site management made easy

Provide easy and flexible site management for Net2 System Engineers and Net2 Operators. Manage multiple sites remotely from a smartphone.

Features include:

- ▶ User admin
- ▶ Managing roll call reports
- ▶ Open door functionality
- ▶ Viewing reports and events

Download now:



Find out more: paxton.info/3395



Feature	Lite	Pro
Multiple clients	•	•
Free upgrades	•	•
CCTV Integration	•	•
Site graphics	•	•
Triggers and actions	•	•
Intruder alarm integration*	•	•
Net2 Entry compatible	•	•
Biometric Integration	•	•
Landlord Tenant	-	•
Timesheet & Timeline*	-	•
Card designer	-	•
Roll call and muster reporting*	-	•
Fire alarm Integration*	-	•
Anti-passback*	-	•
Security lockdown*	-	•
Multi-zone intruder alarm integration*	-	•
Custom days*	-	•
Areas	-	•
Customisable welcome page	-	•
Paxton Connect Admin app**	-	•

* Not available with wireless products

** Paxton Connect Admin app only works with Net2 Pro v6.00 or above

The Construction Products Regulation 2013

- CPR became Law in UK 1st July 2013
- Compliments Building Reg's
- Escape route and Final Exit Doors
- All products used must be certified/harmonised under CE mark
- Use PaxLock Pro on single doors in staff areas(BS EN 179)
- Use hardwired on Read In/Out (BS EN 13637)
- Use hardwired on doors in public areas (BS EN 1125)
- Magnetic locks and GBU are not certified solutions

Further details here at:

[Guidance Note on the Construction Products Regulation](#)

[Keeping Up With Compliance: Escape doors standards](#)



Building Integration

BS EN 179 - Emergency exit devices



BS EN 1125 - Panic exit devices



CE Marking



Conformance

Conformance (commitment to standards)

There are no universally recognised standards for access control equipment. But, there are standards that equipment must comply with once installed or connected to third party systems.

- European Product Approvals
- Information Technology Equipment Standards
- Radio Equipment Standards
- Alarm System Equipment Standards
- Low Voltage Directive
- ISO standards for ID cards
- Marine Standards
- Fire Resistance and smoke control

Case Studies



Humberside Fire & Rescue Case Study

- Centrally manage 12 sites
- PaxLock Pro
- Net2 Entry
- 260 doors
- 300+ users





Thank you

Are there any questions?